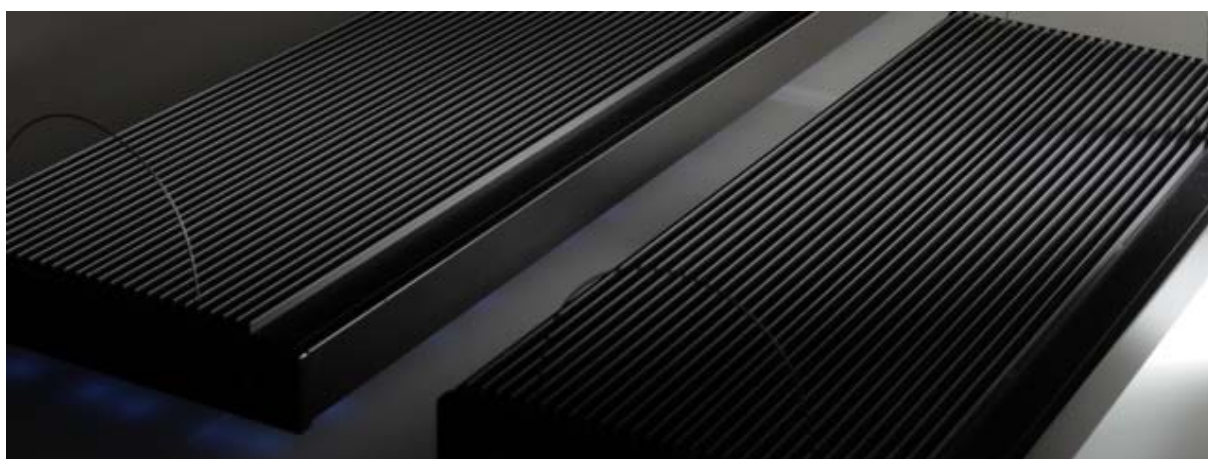


REEF REPUBLIC



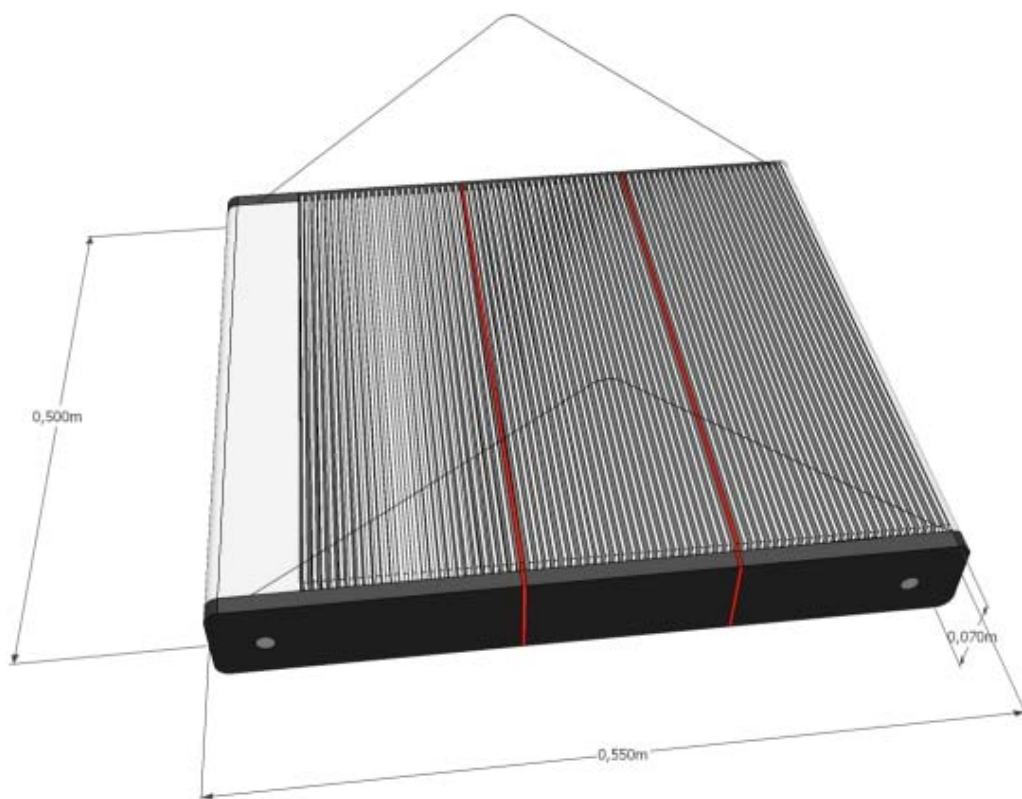
PRODUCT INFORMATION

©REEF REPUBLIC 2011, 80-416 Gdańsk, al. Hallera 132, tel. +48 58 761 4477, kom. +48 661 929562

<http://reefrepUBLIC.com>

In this document we have concluded the information for our products and their technical parameters. We would like to acquaint you with the technology of production and the idea of the product itself. We have attempted to obtain answers to questions that might arise in connection with our products.

We made lamps from 50 to 400 cm in length and in widths from 22 to 104 cm (reefLIGHT™ 2.0, the lamps made with 1,2,3 or even 4 heatsinks - see figure below). We also realize individual orders, taking into account the client's instructions about LED used or specific location. We can also upgrade your existing cover and fill it with LED lighting, or make a new customized to your tank.



We also carry out projects of lamps made of segments (3 segments for a single driver) in the shape of the letters L, X or T taking into account the shape of your tank.



Our basic product range includes three models of lamps:

reefLIGHT™ 50

Specifications:

Dimensions: 50x38x7cm
(L/W/H)

Power: ~100 W

Illumination: ~8000 lux

Wavelength:

White - 6000-6500K

Blue - 465-470nm

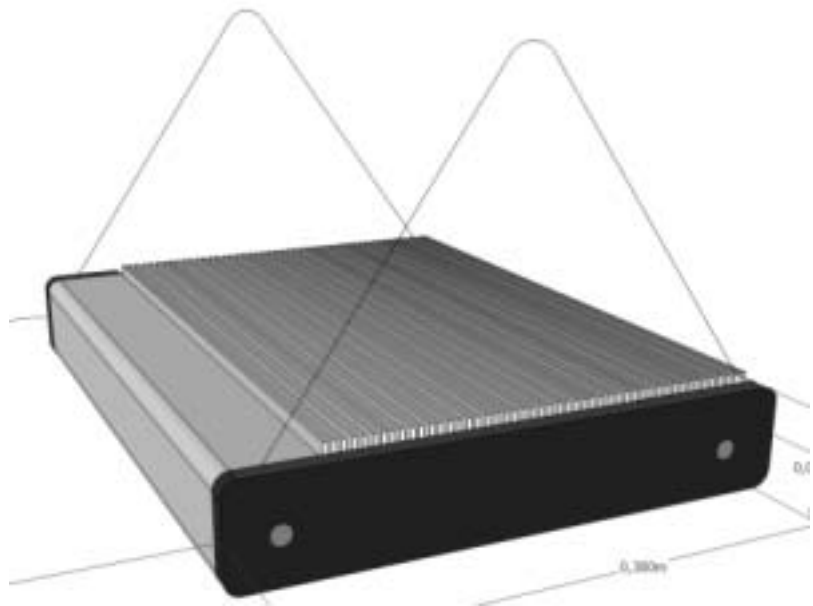
Red - 620-625nm

UV - 400-405nm

Power Supply: 230V/ 50Hz

Interface: reefLINK™

Lighting equivalent – HQI,
1 x 250W, 14.000 K



reefLIGHT™ 100

Specifications:

Dimensions: 100x38x7cm
(L/W/H)

Power: ~200 W

Illumination: ~16000 lux

Wavelength:

White - 6000-6500K

Blue - 465-470nm

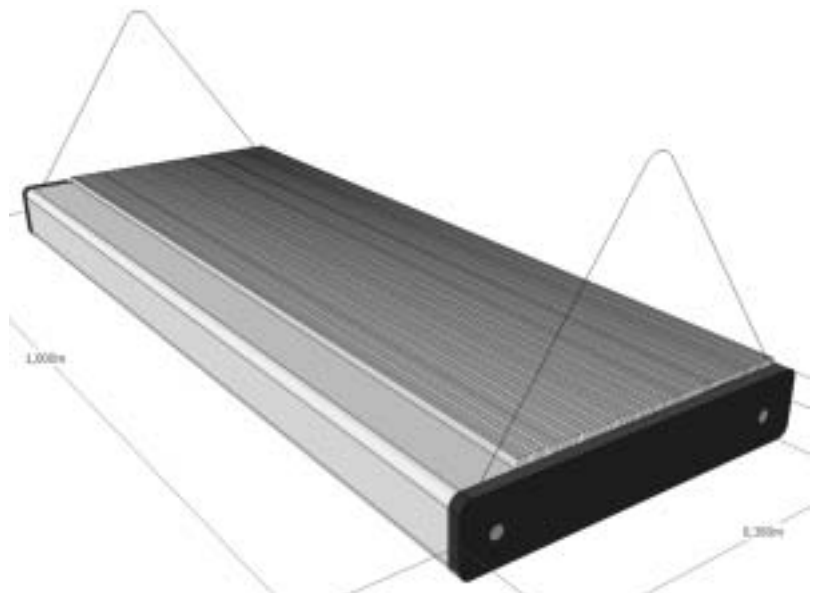
Red - 620-625nm

UV - 400-405nm

Power Supply: 230V/ 50Hz

Interface: reefLINK™

Lighting equivalent – HQI,
2 x 250W, 14.000 K



reefLIGHT™ 150

Specifications:

Dimensions: 150x38x7cm
(L/W/H)

Power: ~100 W

Illumination: ~24000 lux

Wavelength:

White - 6000-6500K

Blue - 465-470nm

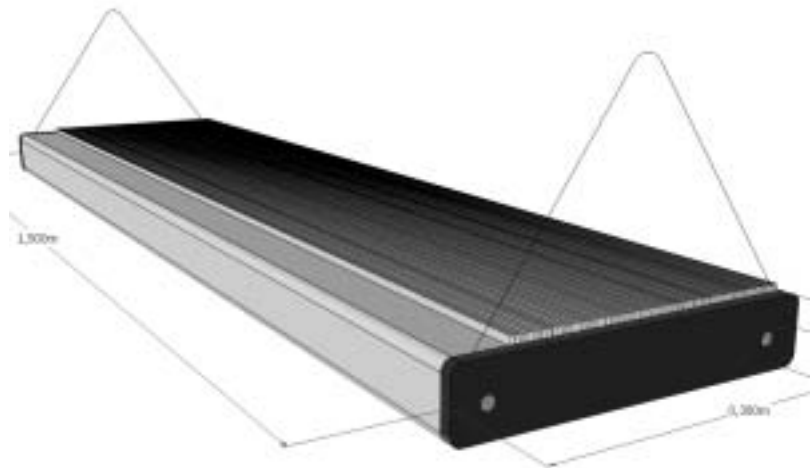
Red - 620-625nm

UV - 400-405nm

Power Supply: 230V/ 50Hz

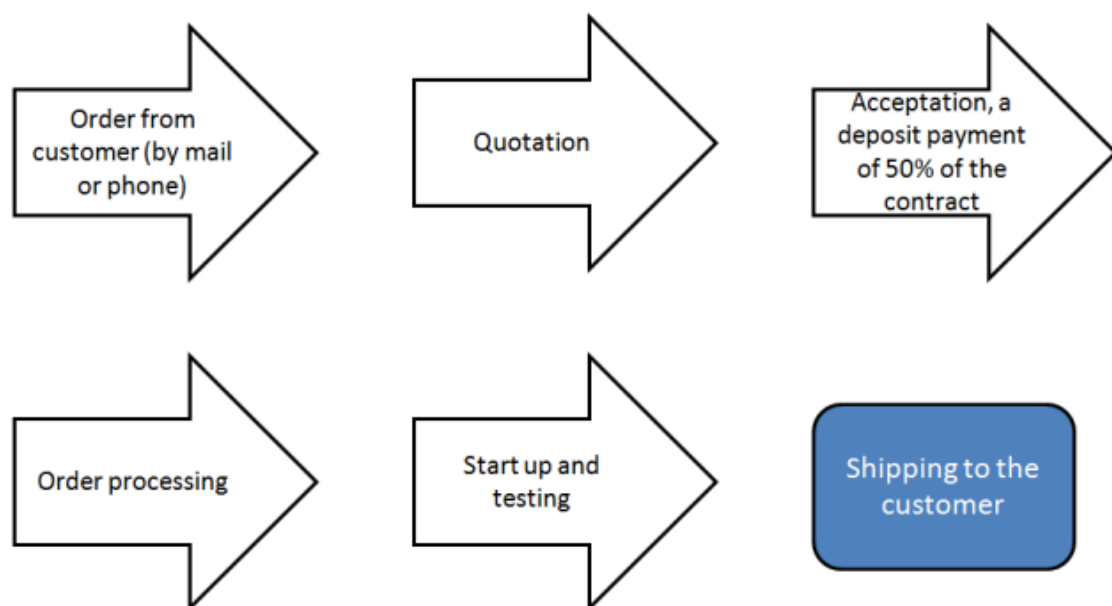
Interface: reefLINK™

Lighting equivalent – HQI,
3 x 250W, 14.000 K



Ordering process, payments and production of the lamp.

Order our product has to be confirmed in advance payment of 50% of the contract. The production process of our lamp lasts from one to three weeks depending of the type and size of ordered lamp, which approximately 72 hours we devote to the testing of your lamp. After passing the tests the lamp is packaged and sent to the recipient. Way of the contract you can see on the following diagram.



How we select lamp parameters (size, number and type of LED, the types of lenses)?

LEDs in our products have passed all necessary tests and come up with a good and trusted source. We are producing lamps that meets all your requirements. If you're thinking about aquarium prepared exclusively for fish, we recommend series of lamps reefLIGHT™ FO. For example, the lamp reefLIGHT™ 100 FO as with the power of 50W is equipped with 23 diodes, blue and white. The ratio of LEDs is respectively 65% blue LEDs and 35% of white LEDs. If you plan to breed corals SPS and LPS we offer a series of lamps reefLIGHT™. For each lamp the ratio of LEDs is respectively: 60% blue LEDs, 30% of white LEDs, red LEDs 5% and 5% of the UV LEDs. In our products we use lenses with an angle of scattering 35° for white light and blue, and the angle lenses with 60° for the red light and UV. On special request or for a deep aquarium, we can make a lamp with a 1.5 or twice the number of diodes. The lamp, however, will require an application of active cooling. At your request measurements of your tank and prepare an individual offer on this lamp.

Free testing trial (for institutional customers only).

For institutional customers we have a special offer of lamp free testing, for a period of two weeks. We will provide for you and run our test lamp in your location. Pick it from you after two weeks. If you will be satisfied with our product, your order will be processed, and we leave the test lamp by the time of your order processing. For the individual customer, we have prepared acrylic test tank with demo LED lighting in our office at al. Haller 132 in Gdansk.

Installment purchase.

At your request, there is a possibility to start a credit related to the purchase of our product.

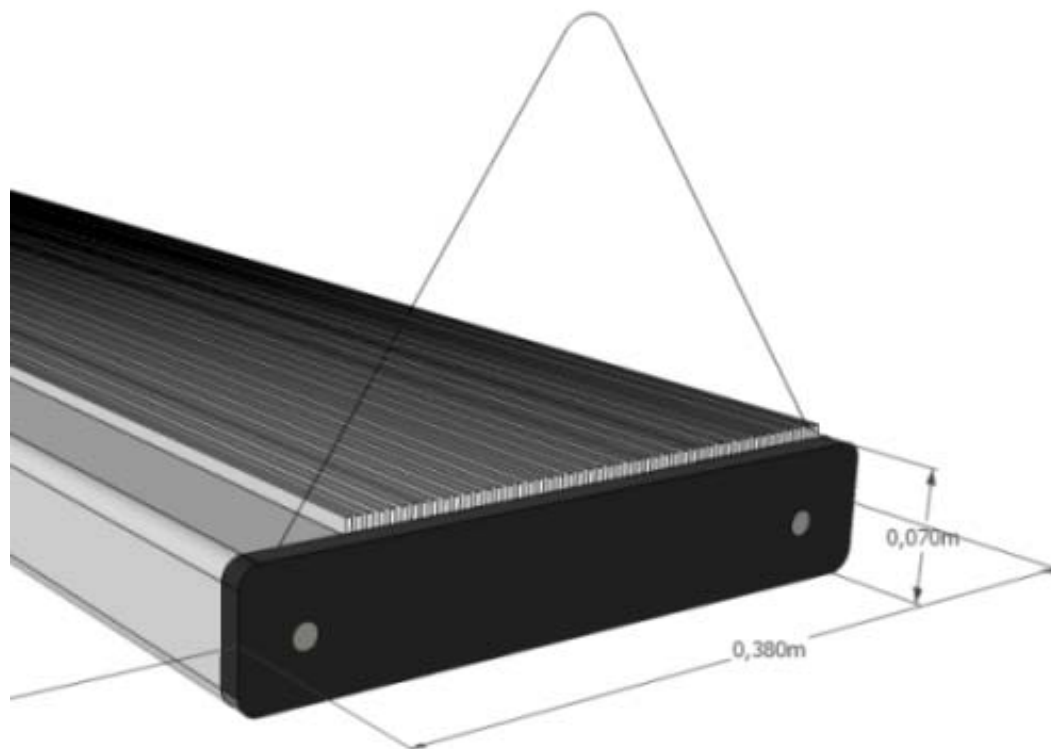
Delivery.

We are goods only send to you via courier. We guarantee that your item reaches you in the shortest possible time.



Our Product idea: Simplicity - Reliability - Accurate sizing.

Our products even though they are high quality products, are also very simple. We reduced for the minimum share of electronics in our product. Inside our lamps is only what is necessary for the proper functioning of the LED. The simplicity of our products ensures their reliability, as it is very important for you as customers of our products. We give them 5-year warranty. Our products are preparing for you based on accurate measurements of your tank.

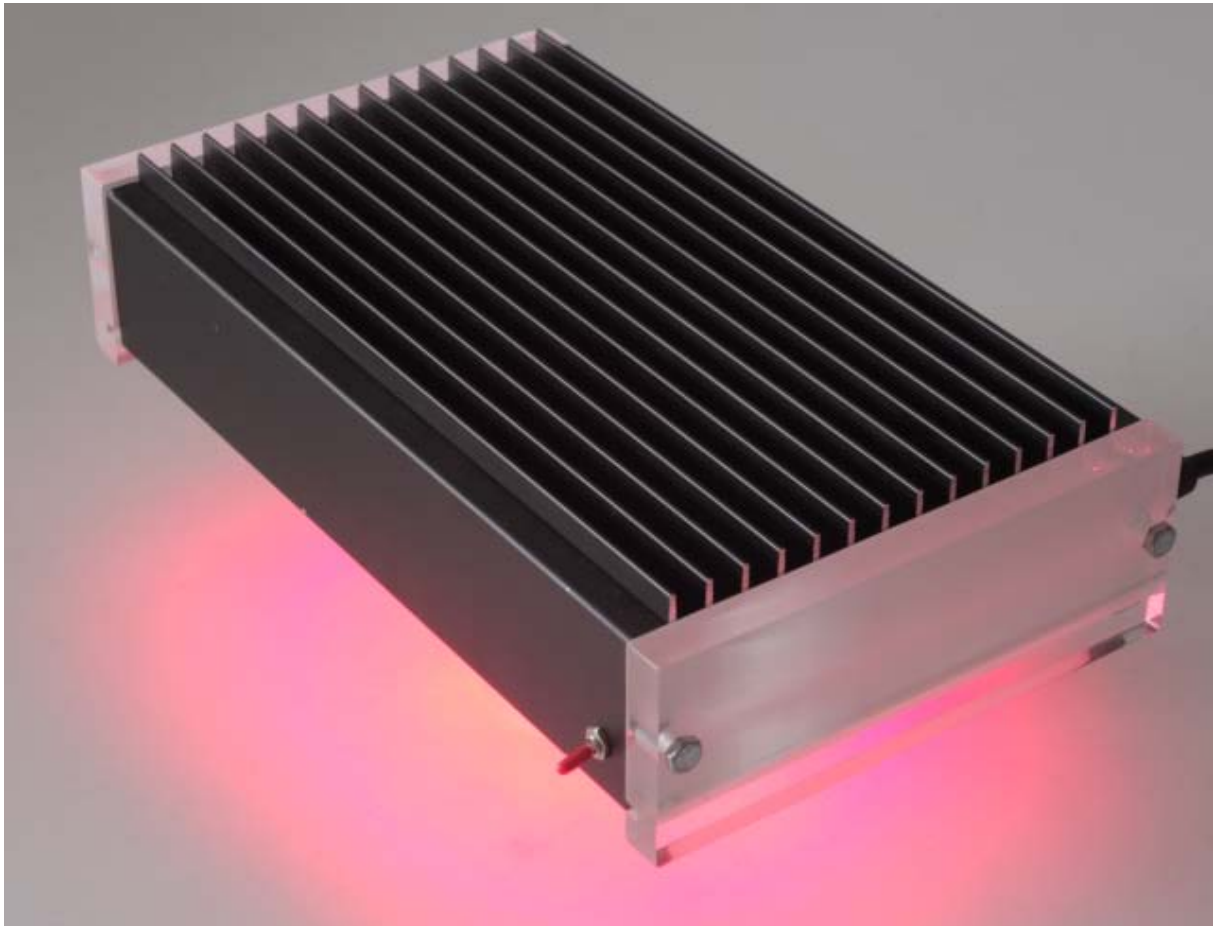


Lamps on special request - for deep aquariums.

In the testing phase and is project of our new product. LED lamps for aquariums depths of up to 2m. By using LEDs with a power of 50 watts have created a product that fully meets customer expectations of deep and large tanks.

Special additions to the lamps, lamps for special purpose.

Soon we will offer accessories for our products, for example the winch to raise the lamp which allows free access to the tank, as well as special purpose lamps for breeding jellyfish or plankton, or special lamps to illuminate the bottom of the aquarium. The following picture shows one of these products.



Complete information about our products we can provide you with our phone number +48 58 761 4477 from 8:00 to 16:00. Our consultant is waiting for your questions. Nothing will be left unanswered. The demo test lamp and show tank can be viewed at:

Salon Akwarystyczny RAFA

al. Hallera 132

80-416 Gdańsk

POLAND

We invite you to visit our website at <http://reefrepUBLIC.com> and our profile in the social networking site FACEBOOK at <http://facebook.com/reefrepUBLIC> .